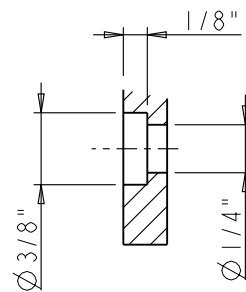
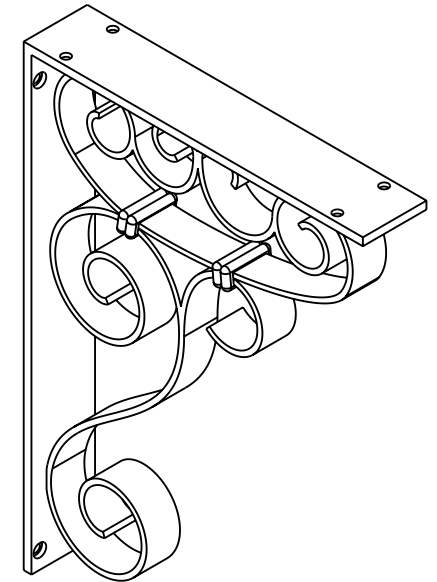
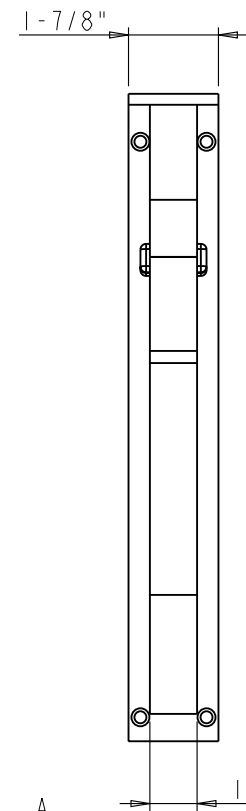
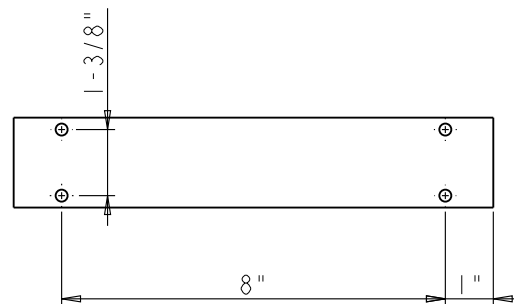


SECTION A-A
SCALE 1:4

7/32" SEE DETAIL A



DETAIL A
SCALE 1:1



| | | | | |
|--|---|--------------------|------------------------|--|
| hardware resources PROPRIETARY AND CONFIDENTIAL THE INFORMATION CONTAINED IN THIS DRAWING IS THE SOLE PROPERTY OF HARDWARE RESOURCES INC. ANY REPRODUCTION IN PART OR AS A WHOLE WITHOUT THE WRITTEN PERMISSION OF HARDWARE RESOURCES INC. IS PROHIBITED. | ITEM: MCOR5 | | MATERIAL: Forged Steel | |
| | FINISH: | | WEIGHT: 3634.90 g | |
| | TOLERANCE UNLESS OTHERWISE SPECIFIED: X: MM ±0.20 XX: MM ±0.10 XXX: MM ±0.05 ANGULAR: ±0.5° DO NOT SCALE DRAWING | | PROJECTION: | |
| | UNIT: | DRAWN BY: alan.liu | DATE: | |
| SIZE: | CHECKED BY: | DATE: | | |
| | APPROVED BY: | DATE: | | |