



Vanity Specifications

VAN011/12

Vanity: 39" x 22-1/2" x 33"

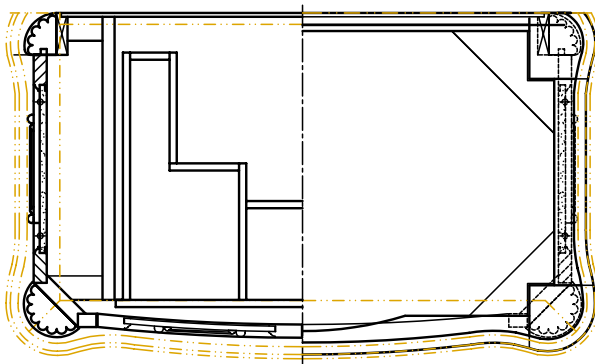
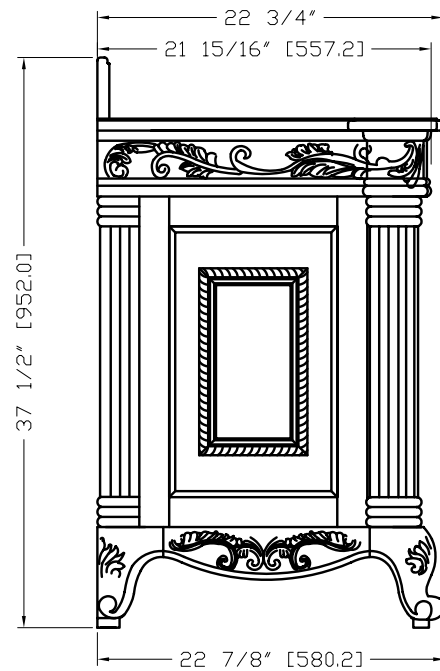
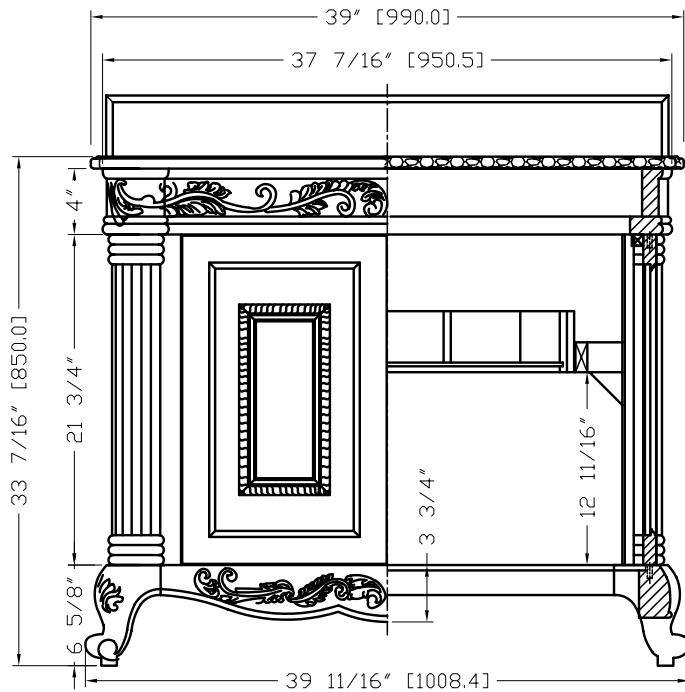
Materials: birch solids and veneers
Full extension ball bearing drawer slides

Top: 39" x 22-3/4" x 3cm

Material: 3cm black granite
Bowl hole cut for 15" x 12" bowl
Faucet holes cut for 8" centerset
2cm backsplash included

Mirror: 33-11/16" x 42"

Beveled glass



www.lyn-design.com

Manufactured by Hardware Resources • www.hardwareresources.com